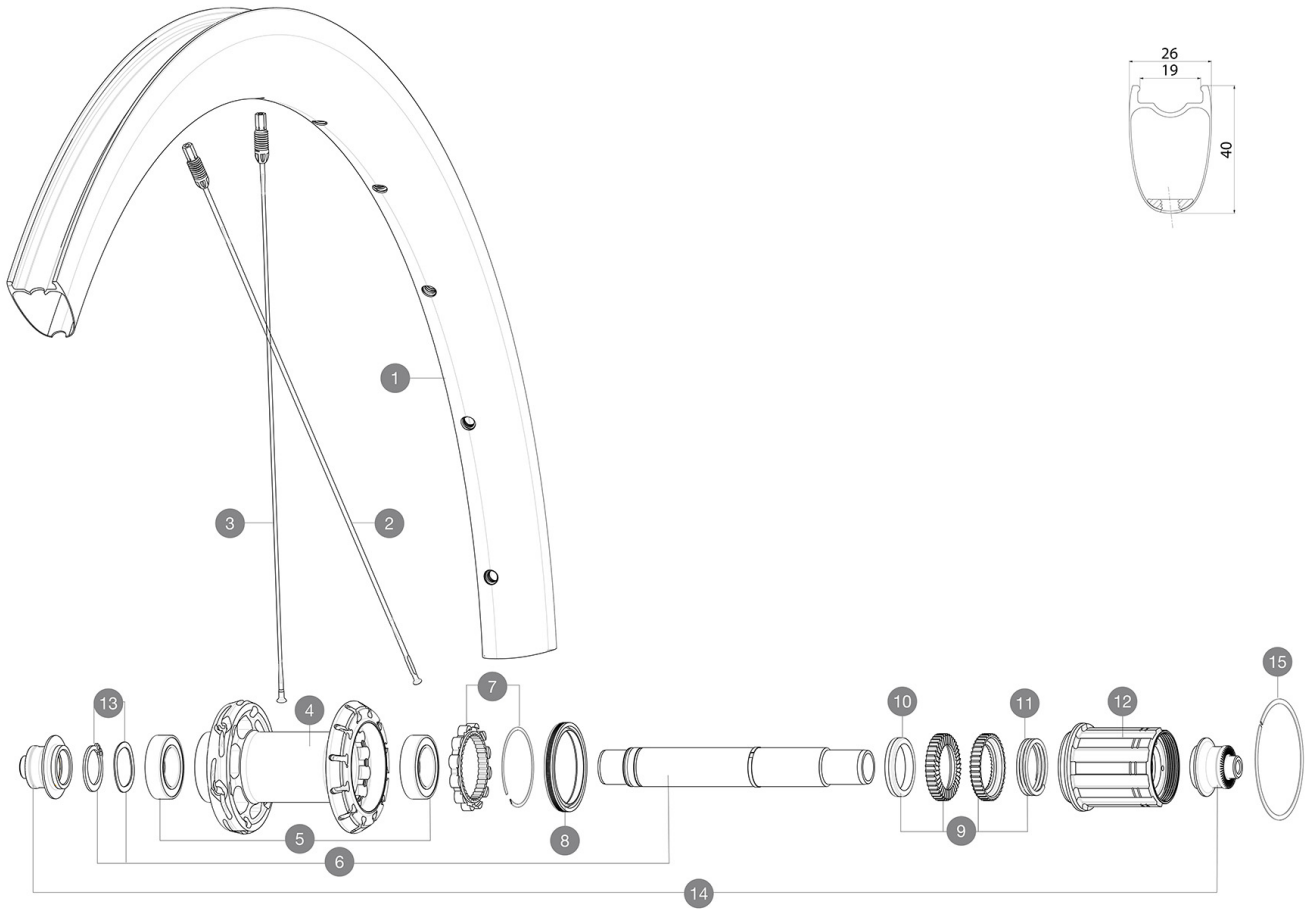


ASTM CATEGORY 1 : road only

## REFERENCES WHEELS



### RIMS



&NBSP;:

1	V4094813	Kit Rear rim Cosmic SLR 40 RB
---	----------	-------------------------------

### SPOKES

2	V3669401	Kit 12 DS Cosmic SLR40 aero ss spk266 M6
3	V3669301	Kit 12 NDS Cosmic SLR40 aero ss spk285M6

### HUB SHELLS

4	N/A	HUB BODY
5	V2560401	KIT 2 BEARINGS 17x28x7 + WAVED WASHER + CLIP
6	V2252801	KIT ID360 UB REAR AXLE W/CLIP/WAVED WASHER
7	V2252701	KIT ID360 INSERT SHAPED EAR LOBE > 2017
8	V2251601	KIT ID360 SEAL + GREASE
9	V2251701	KIT ID360 2 RATCHETS + SPRING + GREASE
10	V2500501	KIT ID360 3 PADS NOISE REDUCING
11	V2251801	KIT 3 ID360 ROAD SPRINGS
12	V3430101	HG11 Freewheel Body ID360
13	V2560501	KIT ADJUST. SYSTEM QRM AUTO ID360 for 17x28x7 bearing
14	V2253101	KIT REAR AXLE ADAPTOR QUICK RELEASE ID360
15	V2252201	KIT 2 REAR HUB RETENTION RINGS 48mm

# MAVIC Cosmic SLR 40

## DELIVERED WITH

BR601 Titanium quick releases (323 485 01 frt, 323 486 01 rear)	
Carbon brake pads (V24 603 01 Shimano/Sram, V24 604 01 Campagnolo)	
UST valve and accessories (129 838 01)	
User guide	

## COMPATIBILITY

Freewheel: Shimano/Sram, convertible to Campagnolo and XD-R with optional driver bodies	
---	--

## Specifications

### RIMS

- **Material** : 100% carbon fiber
- **Height** : 40 mm
- **Valve hole diameter** : 6.5 mm
- **Tire** : UST Tubeless and tubetype
- **Internal width** : 19 mm
- **ETRTO size** : 622x19TC Road Fore Carbon UST Tubeless Ready

### SPOKES

- **Material** : steel
- **Shape** : straight pull, elliptical aero, double butted (patented)
- **Nipples** : Fore integrated aluminum
- **Count** : front 18, rear 20
- **Lacing** : front radial, rear Isopulse Isopulse

### WHEEL HUB

- **Front and rear bodies** : aluminum
- **Axle material** : aluminum
- Infinity Hub
- Instant Drive 360
- QRM Auto

### VERSIONS

- **Freewheel** : Shimano/Sram

### WHEEL WEIGHTS

750